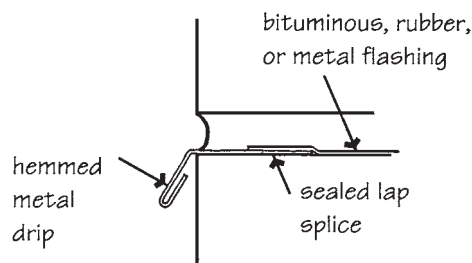
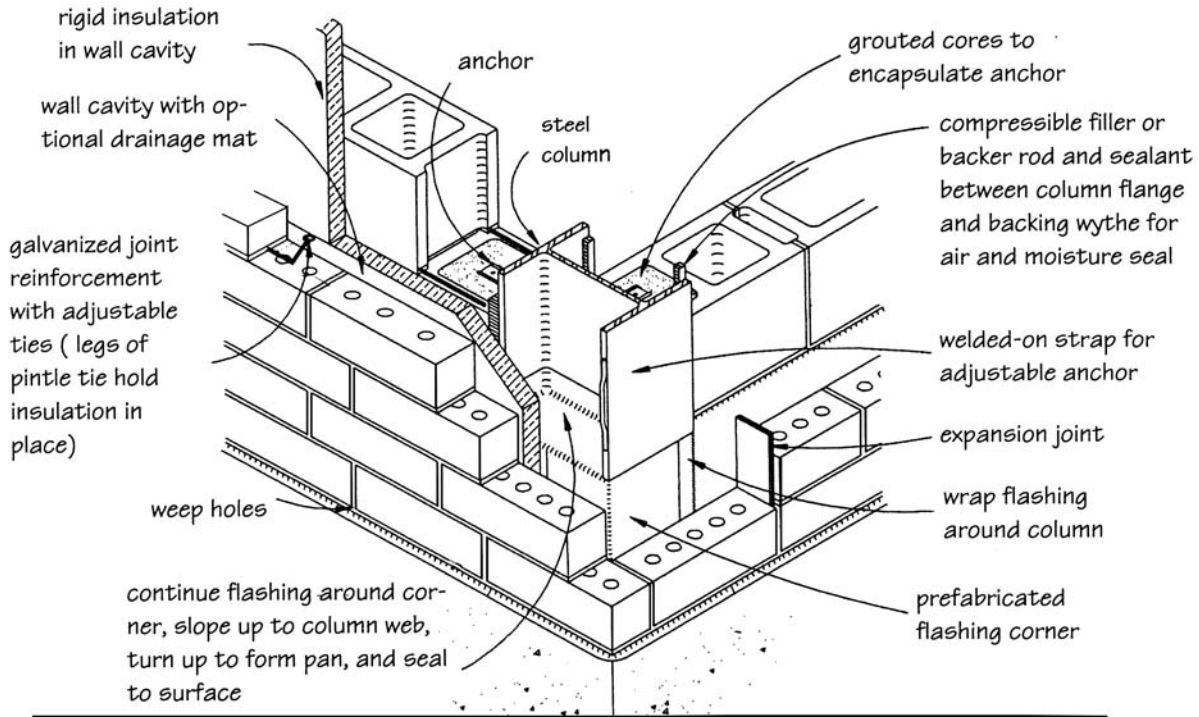


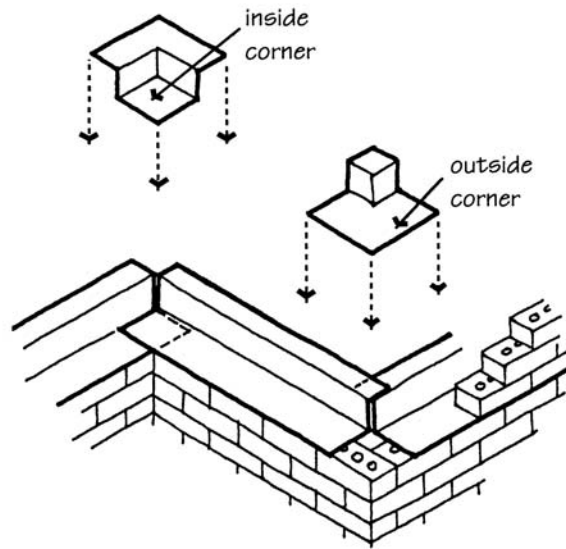
**Figure 9-33** Lap moisture-resistant membrane over flashing.



**Figure 9-34** Metal drip edge.



COMPLEX FLASHING DETAIL AT CORNER COLUMN WEB  
 (Adapted from Laska, Masonry and Steel Detailing Handbook, 1993)



PREFABRICATED CORNER FLASHING

**Figure 9-35** Flashing must be continuous at building corners to prevent water penetration.

Flashing is generally formed from sheet metal, rubber, bituminous membranes, or composite materials selected on the basis of cost and suitability. Joints in the flashing should be lapped and sealed. A double bead of non-hardening butyl caulk or urethane sealant will provide better accommodation of thermal expansion and contraction in metal flashings than soldered